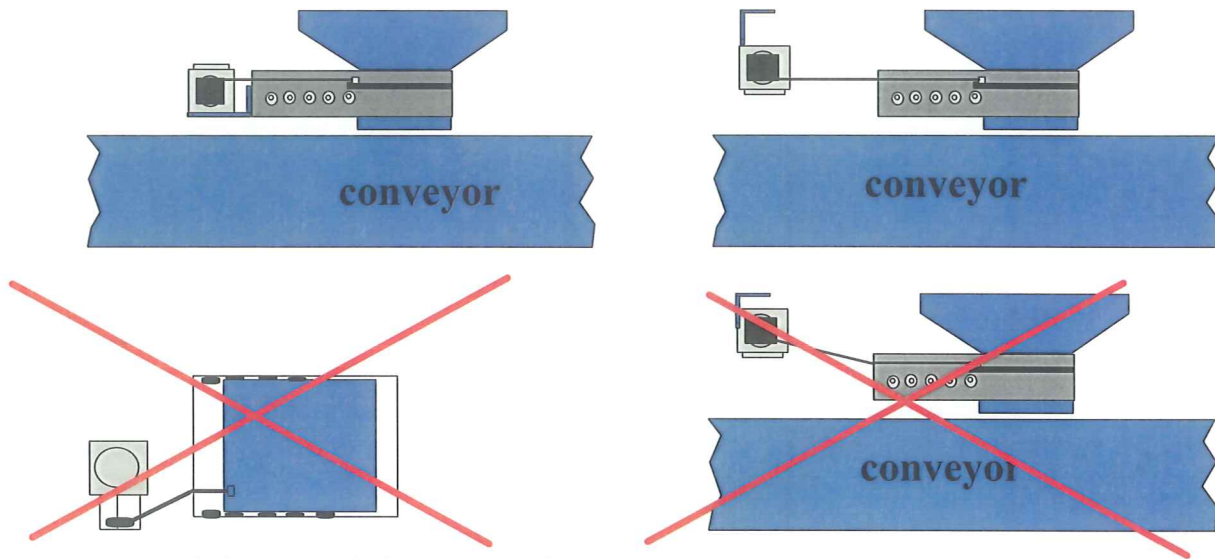


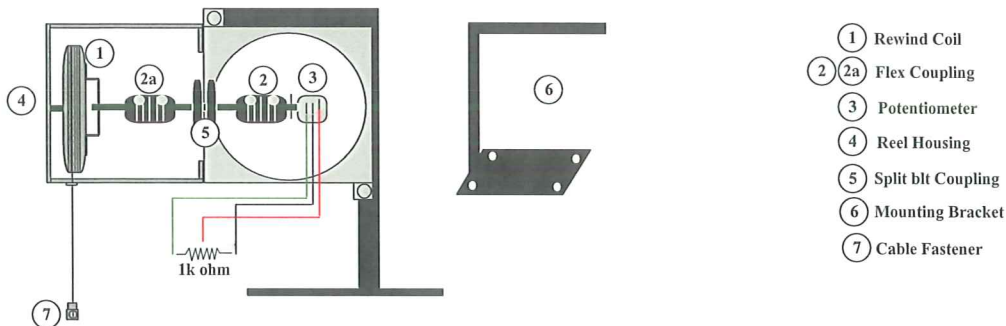
# Percent Operator

## Mounting Options



Alignment is important for correct operation

## Parts Description



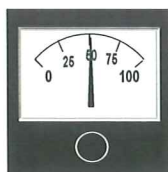
- ① Rewind Coil
- ② ②a Flex Coupling
- ③ Potentiometer
- ④ Reel Housing
- ⑤ Split bit Coupling
- ⑥ Mounting Bracket
- ⑦ Cable Fastener

## Installation

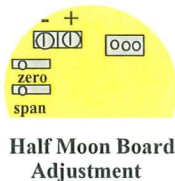
**Warning: Forcing potentiometer (3) further than the stop point will damage the potentiometer**

- Step #1: Determine mounting choice and affix mounting bracket (6) (if used) or other mounting source.
- Step #2: Attach percent operator to the mounting assembly.
- Step #3: Drill hole through gate assembly (1/2" with chase nipple) for attachment point and mount cable fastener (7) to the slide.
- Step #4: Turn flex coupling (2) and tighten set screws.
- Step #5: Extend cable and attach to cable fastener (7), removing excess cable off of the rewind coil (1) except for 1 wrap left on.
- Step #6: Turn flex coupling (2) in the direction of close slowly until stop point of potentiometer (3) is felt.
- Step #7: Holding flex coupling (2) in position, rotate flex coupling (2a) so set screws can be tightened.
- Step #8: Tighten set screws on flex coupling (2a).
- Step #9: Wire operator according to diagram provided.

## Optional Equipment



Percent Meter



Half Moon Board Adjustment

(4 to 20ma)

(24v power supply needed)